

SANLAM
BENCHMARK 2024

ACCELERATING
A BETTER WORKING
SOUTH AFRICA



Cyber Crime

Ashely Singh





Agenda

- ⌚ A real-world example
- ⌚ Cyber Extortion in South Africa and Globally
- ⌚ Detection Threats and Incidents
- ⌚ What Sanlam does and what you can do



Real World Example

—



Details discovered on the web / dark web

about Ashley Singh



- ⊗ ID Number
- ⊗ Tax Number
- ⊗ Home Address + what seems to be previous properties owned
- ⊗ Where he runs
- ⊗ Email addresses (work + Personal)
- ⊗ Cellphone number
- ⊗ Articles he appears in
- ⊗ Family Details: (Children's Names + Where they go to School)
- ⊗ Details on his wife (Name + ID + Tax Number + Cell Number + Addresses tied to her)
- ⊗ Siblings and Cousins names/social profiles
- ⊗ Last International Holiday
- ⊗ Breached credentials for his wife
- ⊗ His secret desire to become an accountant (NOT true if you've read this far)



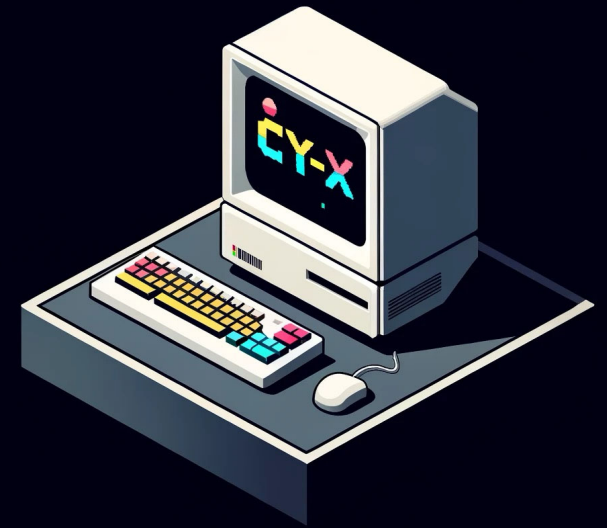
CYBER EXTORTION



CY-X

 from our dark net surveillance

C:_



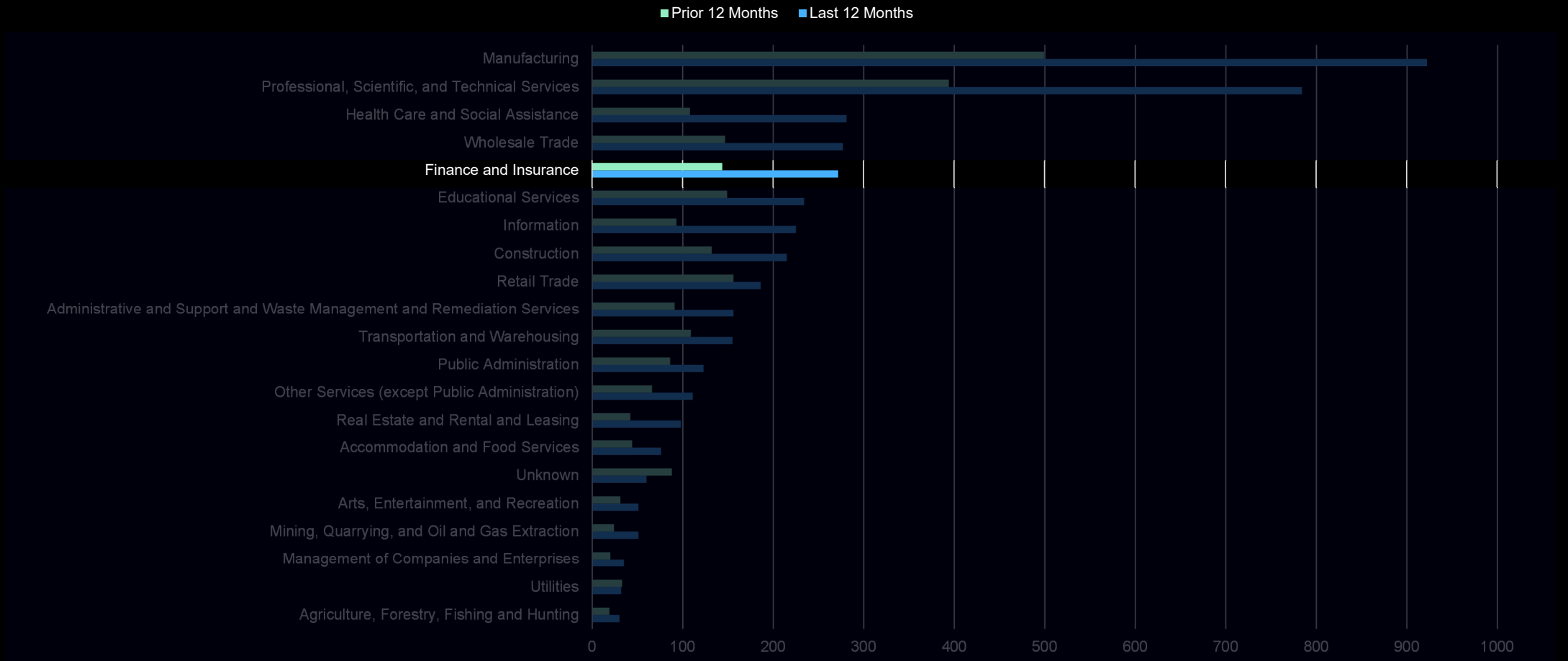
Cy-X over time



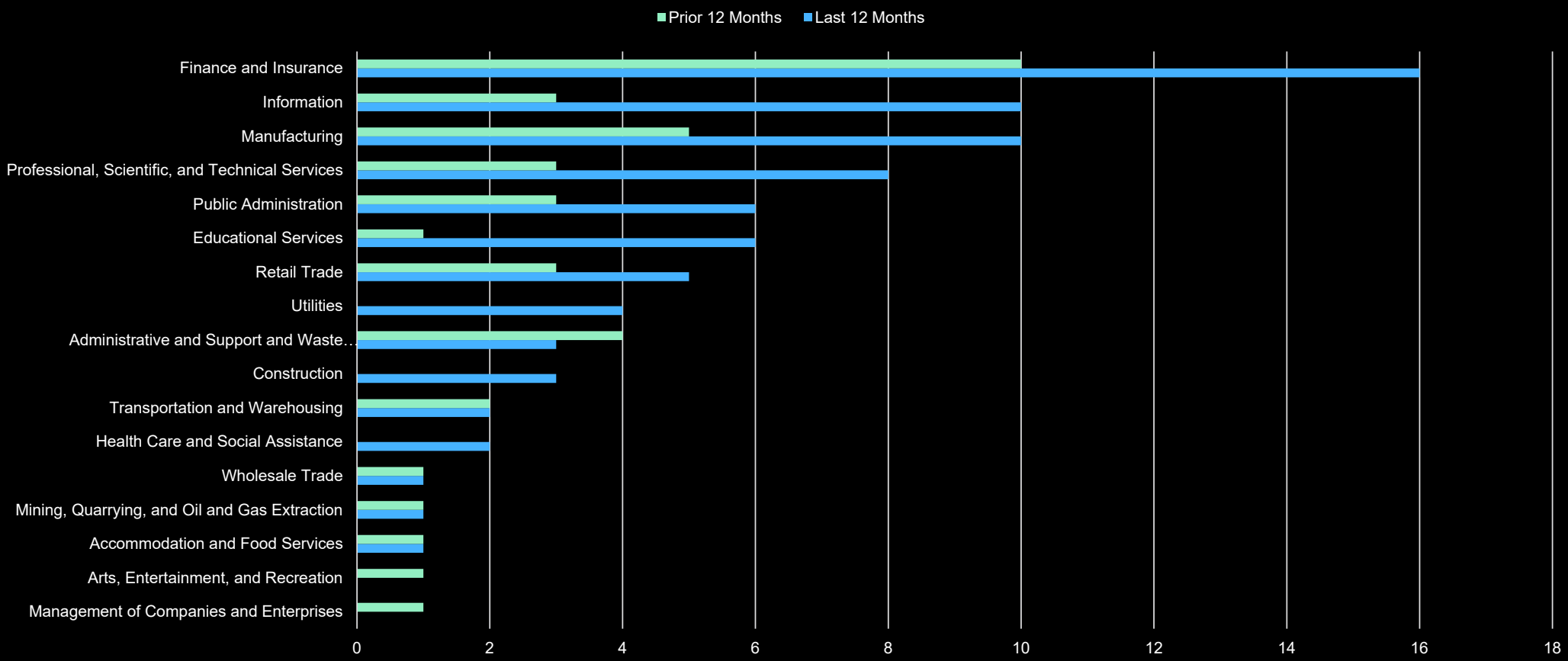
Victims and actors count observed on double-extortion leak sites over time



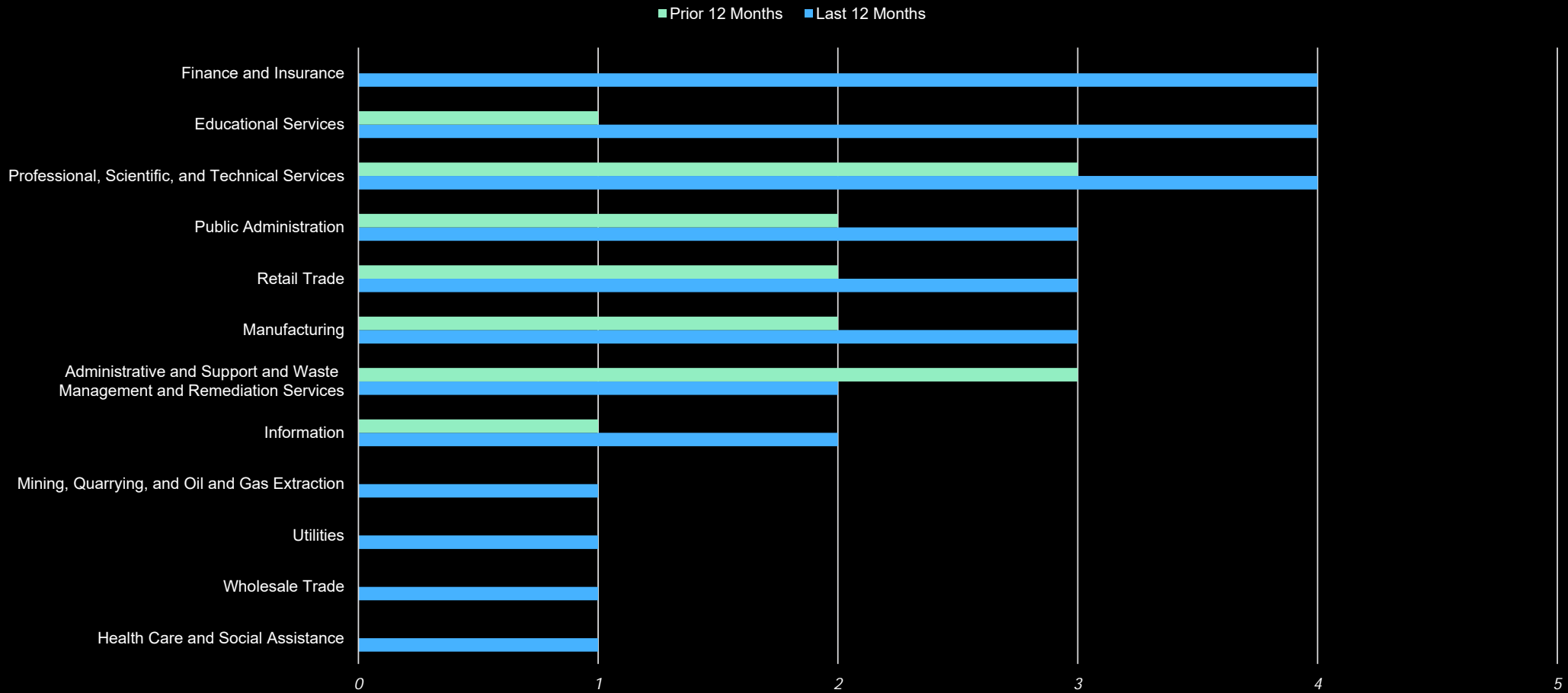
Shift in victims by industry – Globally | Industry breakdown: Comparison between the last and prior year (April 2022 – March 2024)



Shift in victims by industry – Africa | Industry breakdown: Comparison between the last and prior year (April 2022 – March 2024)



Shift in victims by industry – South Africa | Industry breakdown: Comparison between the last and prior year (April 2022 – March 2024)



Threat Detection: Statistics from our CyberSOC threat hunting operations



GAME OVER

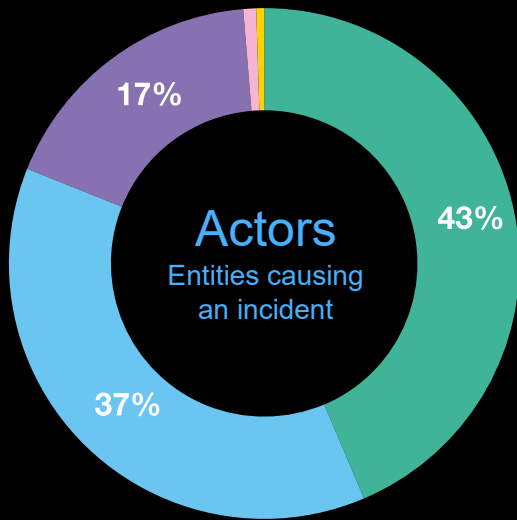


Number of incidents

CyberSOC data analyzed (October 2022 to September 2023)



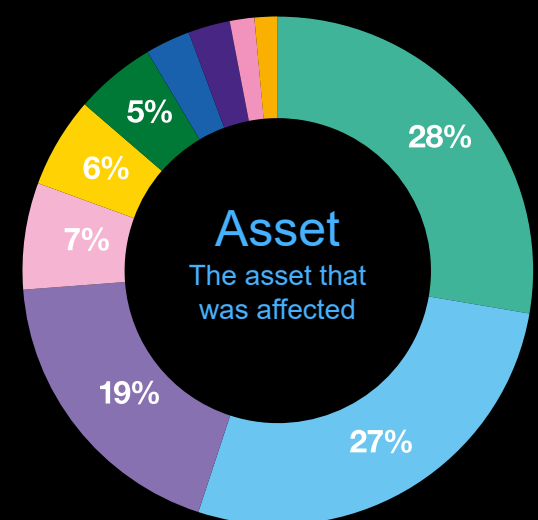
129,395 Potential incidents **▶** **25,076** Confirmed incidents **(=19.37%)**



- External
- Internal
- Unknown Actor
- Other
- Partner



- Hacking
- Misuse
- N/A
- Malware
- Error
- Social
- Other Action
- Physical
- Environmental

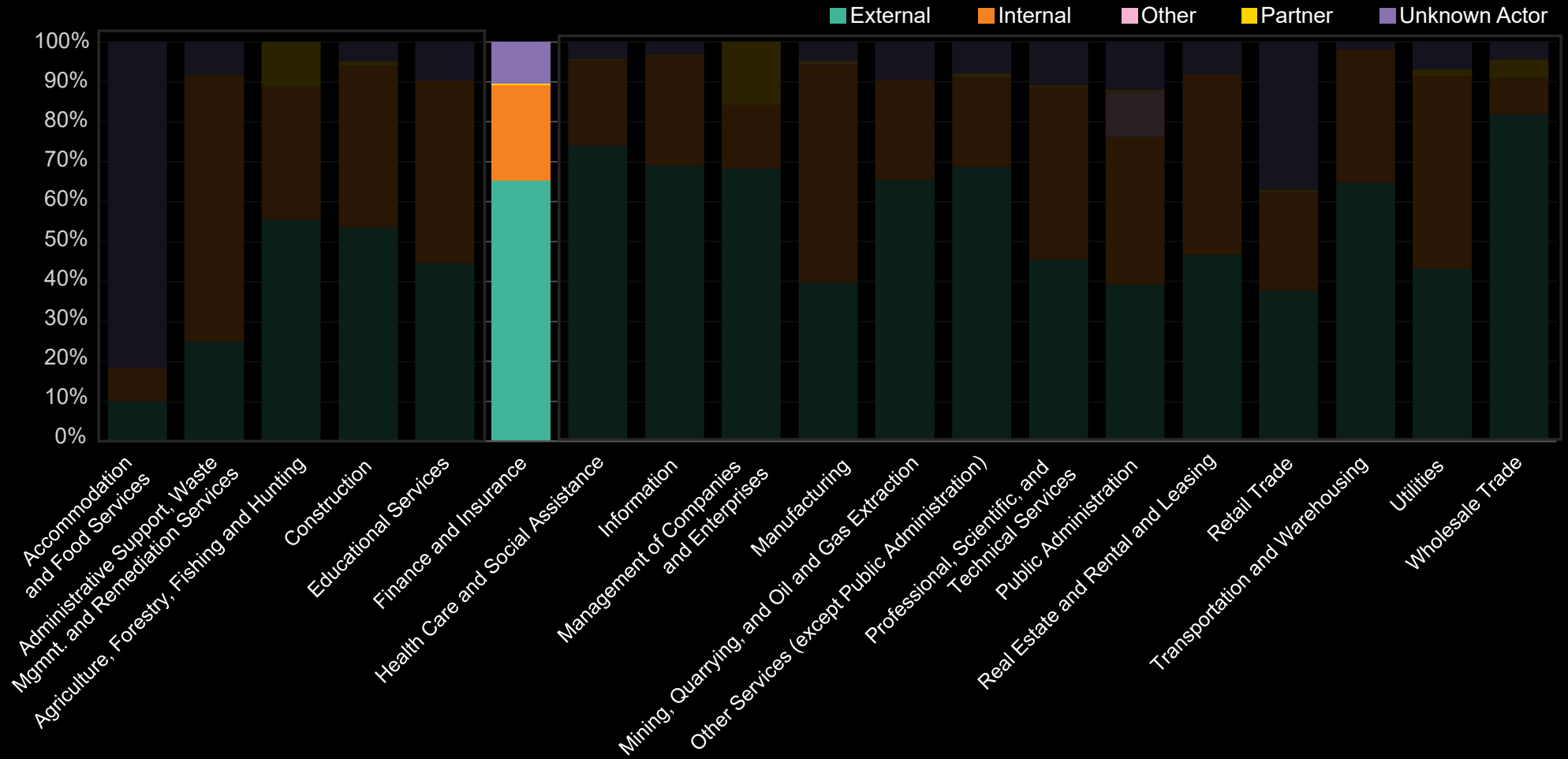


- End user device
- Server
- Unknown Asset
- Account
- Network
- Multiple
- Other
- People
- Media
- Cloud

Sources of incidents by industries



Breakdown of confirmed incidents by actor and vertical



Administrators' ability to mitigate Cybercrime



Survey of 184 Employer and Umbrella Funds.

7/10 expressed concern around Cybersec especially with 2 pot enactment.

Despite this, 4/10 Umbrella Fund participants assess SP Cyber Risk readiness.

Administrators provide us with a copy of their cyber security policy

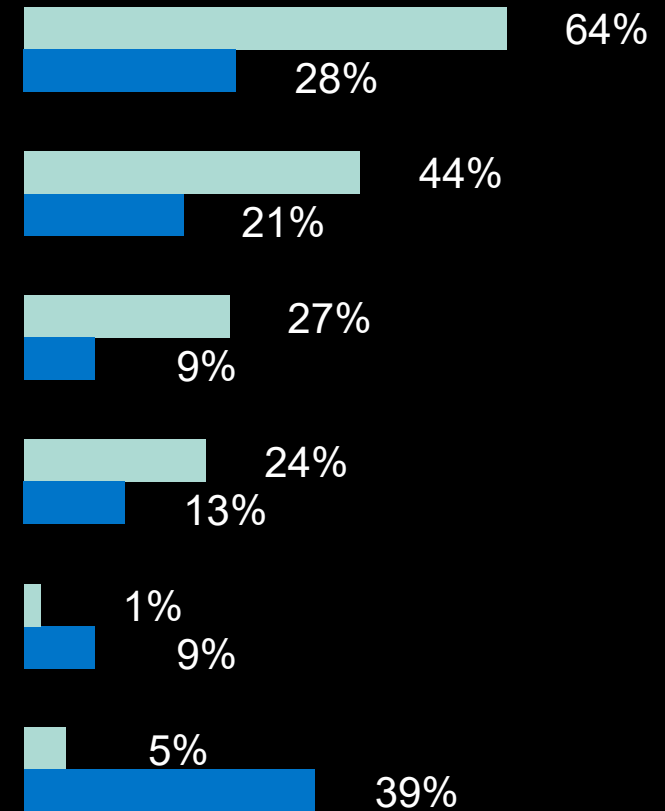
We conduct due diligence at the administrator's office

Include questions in the tender document which deal with cyber security

We have a standard checklist which they must complete

Currently do not evaluate this as part of the tender process, but on the agenda for future implementation

Not part of our assessment process



What can you do and
what is Sanlam doing?





What is Sanlam doing?





What can I do?

Stay proactive both in your personal capacity and in the workplace.

- ⊗ Report incidents.
- ⊗ Monitor your bank account.
- ⊗ Make all your accounts online private.
- ⊗ Use strong passwords or pass phrases.
- ⊗ Change your passwords.
- ⊗ Use 2 factor authentication.
- ⊗ Scan your pc for malware regularly.
- ⊗ Monitor your calls and emails for suspicious contacts.